

PREMIUM COMPACT & COMFORT



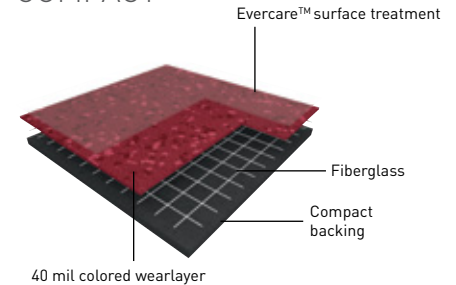
PREMIUM COMPACT & COMFORT is a multilayered calendared and pressed resilient sheet flooring with zero filler for outstanding abrasion and scratch resistance. It has a 40 mil pure colored wearlayer with very densely pressed color chips within the entire thickness, and a matte finish. The fiberglass grid and compact backing provides durable two dimensional stability and superior traffic resistance to heavy rolling loads.

OUR Evercare™ is the latest improvement in polyurethane surface treatment obtained by UV laser cross-linking. The treatment shields floors from stains due to chemical products used in the healthcare industry and increases the durability of the flooring.

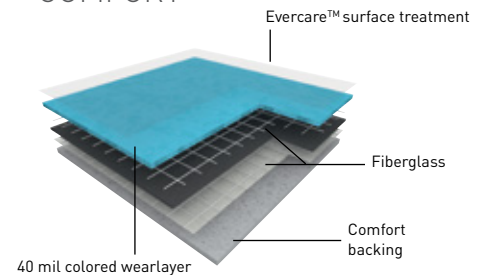
CONTRIBUTES TO SUSTAINABLE ENVIRONMENT

- ▶ 100% REACH compliant
- ▶ Recycled Content 53%
- ▶ Extremely low VOC 100 times lower than industry requirements
- ▶ FloorScore® certified
- ▶ Third party product-specific Type III EPD available

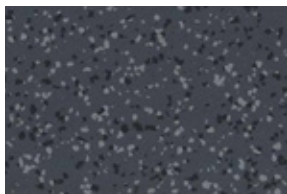
COMPACT



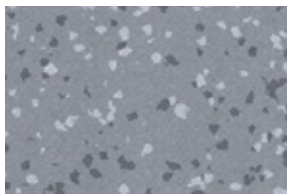
COMFORT



BRAZILIA



3707 PARAIBA



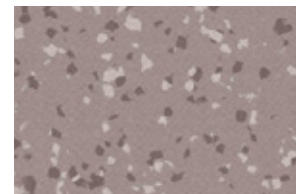
3709 CEARA



3734 ALMERIM



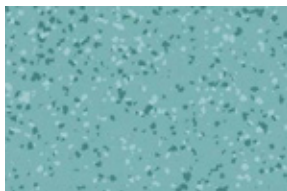
4136 SAO LUIS



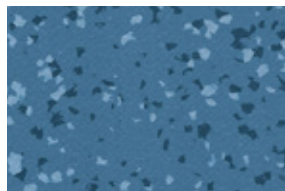
4329 BACABAL



4342 JUARA



4477 MACEIO



4478 COPACABANA



8157 GOIAS



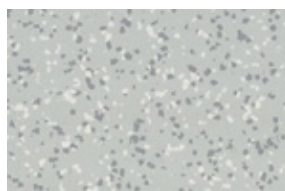
8269 IPANEMA



8386 BOA VISTA

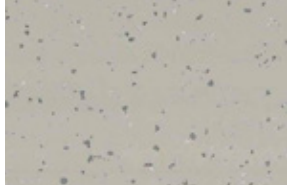


8577 AMAZONAS



8736 RECIFE

INDIANA



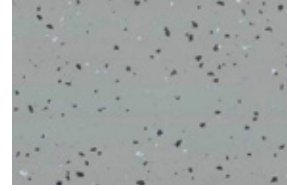
3788 NAURU



4001 OFU



4002 MANUA



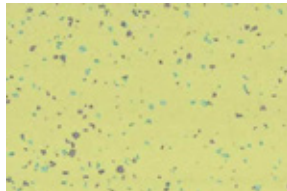
4003 TAO



4004 PAGO



4009 TUFOA



4015 GUINEA



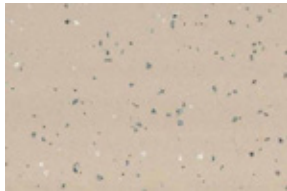
4135 ALDABRA



4142 PENANG



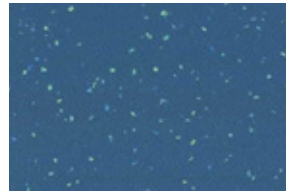
4146 MOHELI



4343 TOKELAU



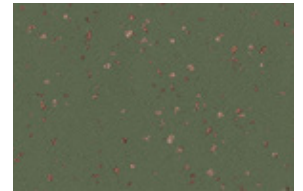
4469 PEMBA



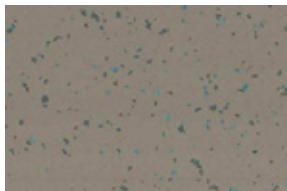
4476 WATTARU



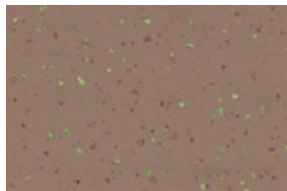
4526 LASIA



7517 FAROE



8053 ANAMBAS



8059 NICOBAR



8150 BALI



8194 KORNATI



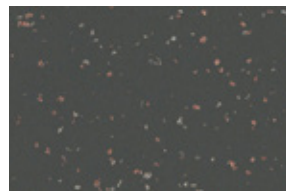
8226 FIDJI



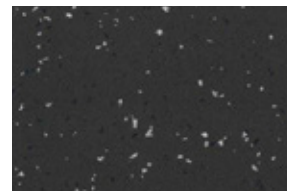
8256 TAHAA



8262 RODRIGUES



8470 SAMOA



8837 SONGO



8850 MAUPITI

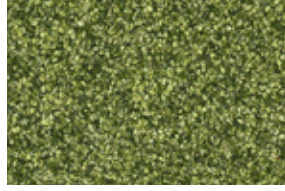
METALLICA



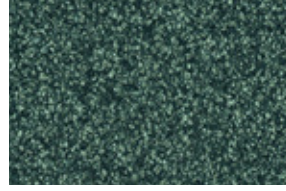
2746 YMIR



8257 NYX



8623 SEDNA



8624 TRITON



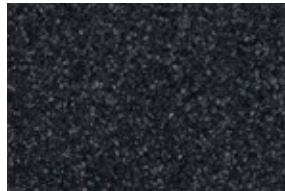
8625 NAÏADE



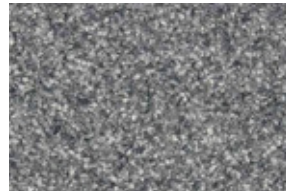
9310 TETHYS



9330 MOON



9719 ECLIPSE

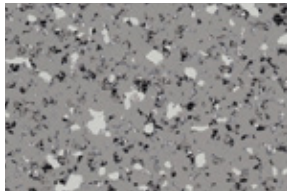


9745 COSMIC

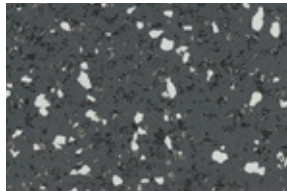


9753 ENERGY

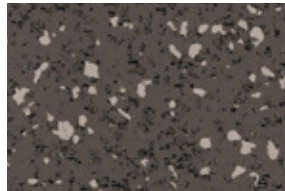
NEOPOLIS



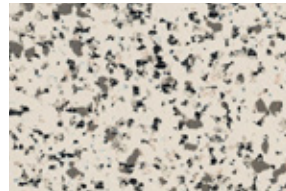
2740 HARLEM SOFT



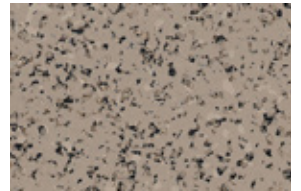
2741 BROOKLYN



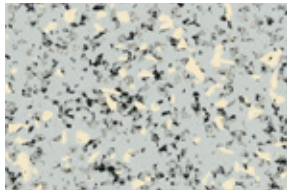
2742 TIMES SQUARE



2743 CENTRAL PARK



2744 QUEENS SOFT



2745 PLAZA

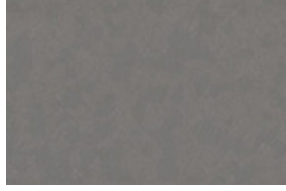
OSMOZ



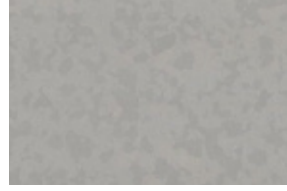
0356 DENIM



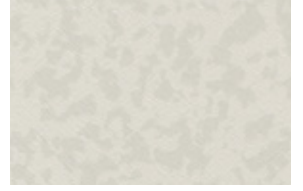
0702 KUMQUAT



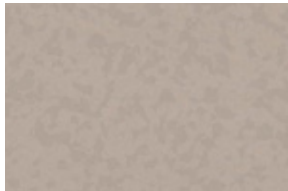
3791 SLATE GREY



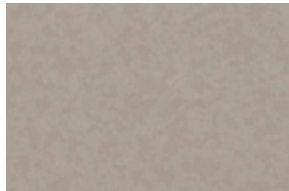
3792 STORM GREY



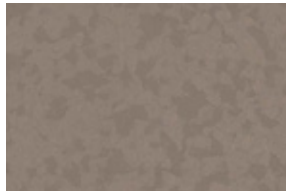
4364 IVORY



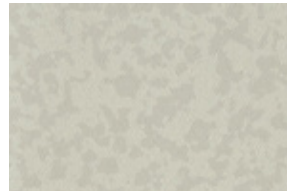
4349 ANGORA



4350 ELEFANT



4351 GREIGE



4365 ALPAGA NEW



4496 PACIFIC BLUE



4527 BAMBOO



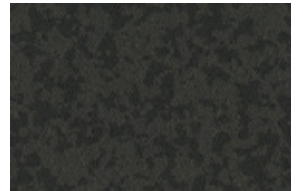
7108 GRENADINE



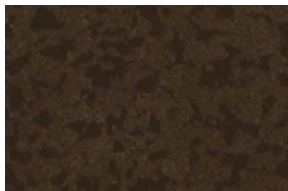
7204 MIMOSA



7735 COFFEE BROWN

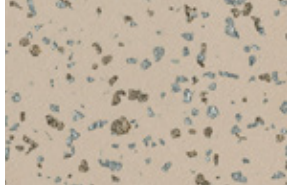


7737 PEPPER GREY

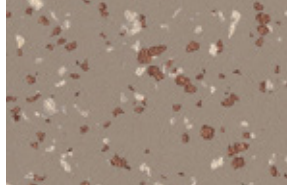


8073 COCOA

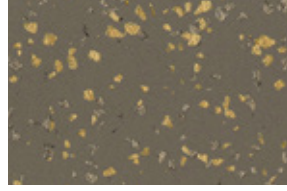
POESY



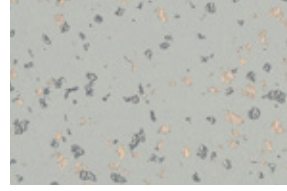
2747 BALLADE



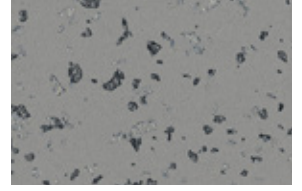
2748 REFRAIN



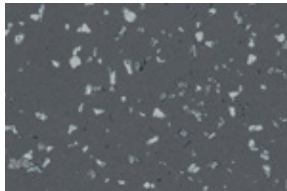
2749 LYRIQUE



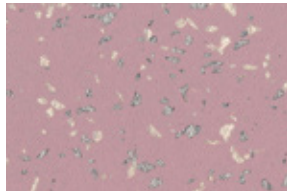
2750 ELLIPSE



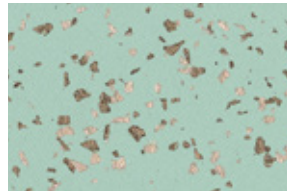
2751 SLAM



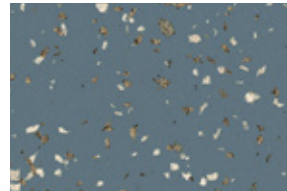
2752 LITOTE



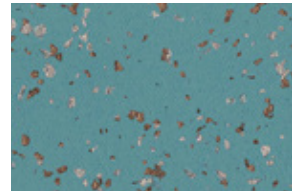
7109 IDYLLE



8621 ODE



8626 RIME



8627 ALLEGORIE

PREMIUM COMPACT & COMFORT



6'6"

Evercare™

FloorScore®

EPD®

DESCRIPTION	STANDARDS	REQUIREMENTS	PREMIUM COMPACT	PREMIUM COMFORT
PRODUCT DESCRIPTION			Heterogeneous sheet flooring with a 40 mil 100% pure colored wear-layer over fiberglass grids and a recycled compact or comfort backing	
Reference Specification	ASTM F1303	-	Type 1 Grade 1 Class B	Type 1 Grade 1 Class C
Surface Treatment/Maintenance	-	-	Patented Evercare™ Stain Shield Surface Treatment	
Wearlayer Thickness	ASTM F410	-	40 mil Pure Colored	
Gauge Total Thickness	ASTM F386	≥ 0.075"	0.08" (2mm)	0.12" (3mm)
Roll Width	-	-	6'6" (2m)	
Roll Length	-	-	66' (20 lm)	82' (25lm)
Coverage/Roll	-	-	430ft² (40m²)	538ft² (50m²)
Weight	-	-	0.55 lb/ft² (2.6 kg /m²)	0.58 lb/ft² (3.0 kg /m²)
PERFORMANCE				
Static Load (175 psi)	ASTM F970	≤0.005"	-0.0005" Meets Requirements	
Indentation - Residual (75lb)	ASTM 1914	≤ -0.012"	-0.002" Meets Requirements	-0.007" Meets Requirements
Flexibility	ASTM F137	>1.5"	Meets Requirements	
Coefficient of Friction	ASTM D2047	-	0.57 (Leather) / 0.95 (Standard Neolite)	
Chemical & Stain Resistance	ASTM F925	-	No Residual Stains, Excellent	
Resistance to Heat	ASTM F1514	ΔE≤8	Meets requirements	
Resistance to Light	ASTM F1515	ΔE≤8	Meets requirements	
Impact Sound Insulation	ISO 717-2	-	8dB	17dB
Smoke Density (Flaming and Non-Flaming)	ASTM E662	-	Meets requirements	
Fire Rating	ASTM E648	Class 1	Class 1	
	CAN\ULC S102.2	-	Tested in Accordance	
ENVIRONMENT HEALTH & SAFETY				
Naturally Antibacterial; Combats MRSA, E. Coli and S. Aureus*	ISO 22196	-	Inhibits Spread of Infections at 99%	
Plant Certifications	-	-	ISO 9001, ISO 14001	
Production Waste	-	-	100% Manufacturing Waste Recycled	
End of Life	-	-	100% Recyclable	
MATERIALS & RESOURCES (MR): BUILDING PRODUCT DISCLOSURE & OPTIMIZATION (BPDO)				
Environmental Product Declaration (EPD)	LEED v4 MR BPDO	1 Product	Type III Certified	
Health Product Declaration (HPD v2.1)	LEED v4 MR BPDO	1 Product	Self Declared	
Sourcing of Raw Materials: Recycled Content	LEED v3 MR c4	Contributes	53% Pre-consumer Content	
	LEED v4 MR BPDO			
Sourcing of Raw Materials: Restriction Use of Harmful Chemicals	LEED v4 MR BPDO	Contributes in International Projects	100% REACH Compliant	
INDOOR ENVIRONMENTAL QUALITY (IEQ)				
Low Emitting Materials	LEED v3 IEQ c4.3	Contributes	FloorScore®	
	LEED v4 IEQ			
TVOC After 28 Days	ISO 16000-6	-	< 10 µg/m³	
WARRANTY	10-year limited manufacturer warranty when installed in accordance with Gerflor's installation instructions on www.gerflorusa.com			

*The best defense against the spread of infections is the implementation of an effective cleaning method.